



Series VC
Direct Operated 2 Port Solenoid Valve for Heated Water

Series VCB



Multipurpose Valve for Heated Water
 Direct Operated 2 Port Solenoid
 Valve for Heated Water

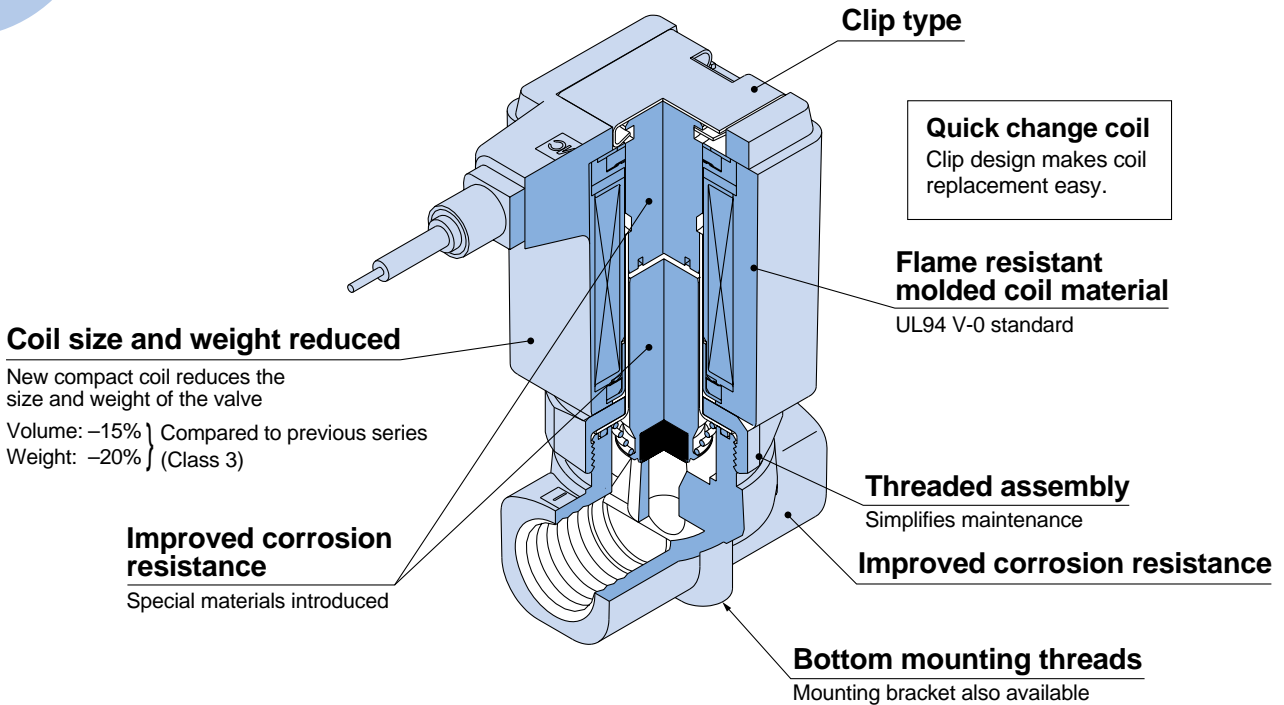
Series VCB

Improved durability (Nearly twice the life of the previous series)

Use of special magnetic material reduces the operating resistance of moving parts. Longevity, wear resistance and corrosion resistance improved.

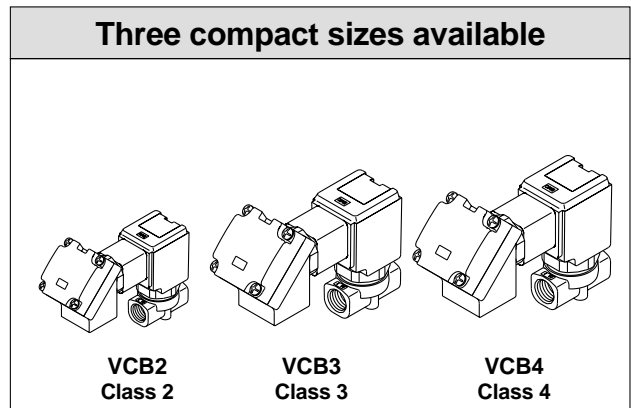
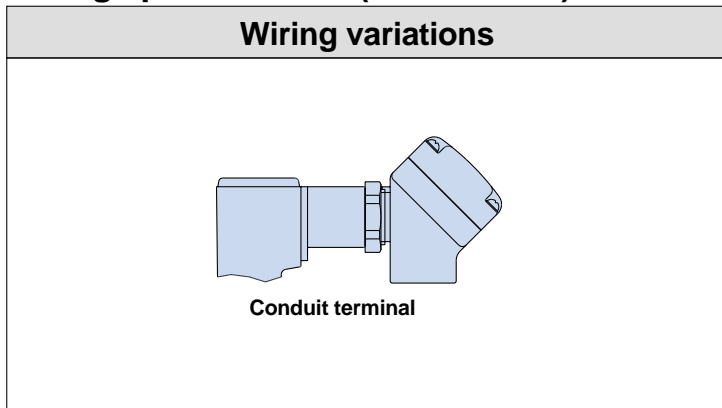
**High flow rate:
 157 to 2062 N/min**

Compact: Single valve volume reduced 15% (Class 3)



Enclosure: Dust-proof & splash-proof (IP65 equivalent)

Wiring specifications (Class H coil)



Direct Operated 2 Port Solenoid Valve for Heated Water

Series VCB

How to Order Valves

VC B 2 1 1 G 2 02 □ □ □ Q

For heated water

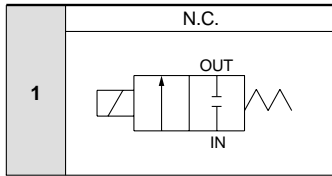
When no symbol is shown for material and insulation type

- Body material: CAC406
- Seal material: FKM
- Coil insulation: Class H

Series

2	Class 2
3	Class 3
4	Class 4

Valve type



Voltage

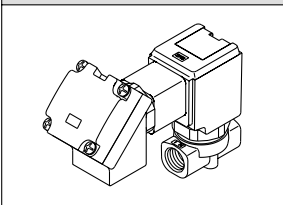
1	100VAC
2	200VAC
3	110VAC
4	220VAC
36	230VAC
9	*Other, less than 250VAC



* Consult SMC regarding other voltages.

Electrical entry

T - With conduit terminal
TL - With conduit terminal and light



Option

Nil	None
F	Foot type bracket

Material and insulation type

Symbol	Body material	Seal material	Coil insulation
Nil	CAC406	FKM	Class H
M	BC6	EPDM	
N	SUS	FKM	
P		EPDM	

Thread type

Nil	Rc
N	NPT
F	G

Port size

Symbol	Port size	Class 2	Class 3	Class 4
01	1/8 (6A)	○	—	—
02	1/4 (8A)	○	○	○
03	3/8 (10A)	—	○	○
04	1/2 (15A)	—	○	○
06	3/4 (20A)	—	—	○

Orifice size

Symbol	Orifice size (mmø)	Class 2	Class 3	Class 4
2	2	○	—	—
3	3	○	○	○
4	4	○	○	○
5	5	○	○	○
7	7	—	○	○
10	10	—	○	○

* Refer to the table below for orifice and port size combinations.

Orifice and port size combinations

Class	Port size	Orifice size (mmø)					
		2	3	4	5	7	10
2	1/8 (6A)	●	●	●	●	—	—
	1/4 (8A)	●	●	●	●	—	—
3	1/4 (8A)	—	●	●	●	●	—
	3/8 (10A)	—	●	●	●	●	●
4	1/2 (15A)	—	—	—	—	—	●
	1/4 (8A)	—	●	●	●	●	—
	3/8 (10A)	—	●	●	●	●	●
	1/2 (15A)	—	—	—	—	—	●
4	3/4 (20A)	—	—	—	—	—	●

Standard Specifications



Valve specifications	Valve construction		Direct operated poppet
	Fluid		Heated water (99°C or less)
	Withstand pressure MPa		5.0
	Body material		CAC406 (BC6), SUS
	Seal material		FKM, EPDM
	Ambient temperature °C		-20 to 100
	Fluid temperature °C		99 or less
	Enclosure		Dust proof, Splash proof (equivalent to IP65)
	Environment		Location without corrosive or explosive gases
	Valve leakage cm ³ /min		0 (with water pressure)
	Mounting orientation		Unrestricted
Vibration/Impact resistance m/s ² Note 1)		30/150 or less	
Coil Specifications	Rated voltage		100VAC, 110VAC, 200VAC, 220VAC, 230VAC (50/60Hz)
	Allowable voltage fluctuation		±10% of rated voltage
	Coil insulation type		Class H
	Power consumption W 50/60Hz		VCB2: 4.9/4.1, VCB3: 7.7/6.6, VCB4: 10.5/9.3
	Apparent power VA 50/60Hz	Inrush	VCB2: 22/19, VCB3: 36/30, VCB4: 45/37
		Holding	VCB2: 10/8, VCB3: 15/13, VCB4: 19/16

Note 1) Vibration resistance ... Conditions when tested with one sweep of 10 to 300Hz in the axial direction and at a right angle to the armature, in both energized and deenergized states

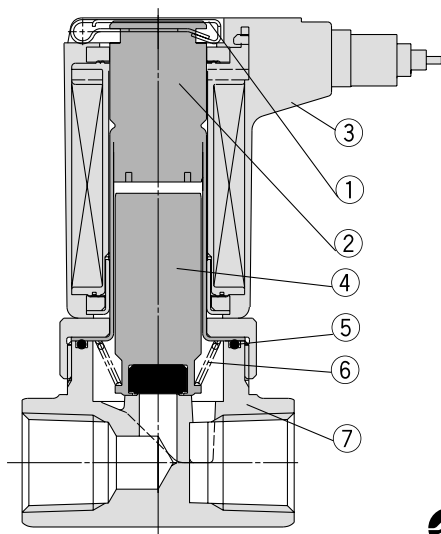
Impact resistance Conditions when tested with a drop tester in the axial direction and at a right angle to the armature, one time each in energized and deenergized states

Characteristic Specifications

Model	Class	Note 1) Port size	Note 1) Orifice size mmø	Maximum operating pressure differential MPa	Effective area mm ² (N/min)	Maximum operating pressure MPa	Weight kg
VCB2	2	1/8 (6A) 1/4 (8A)	2	2.0	2.8 (157)	3.0	1/8: 0.21 1/4: 0.24
			3	0.8	5.9 (324)		
			4	0.5	9.2 (500)		
			5	0.3	11.7 (638)		
VCB3	3	1/4 (8A) 3/8 (10A) 1/2 (15A)	3	2.0	6.3 (344)	3.0	1/4: 0.42 3/8: 0.40 1/2: 0.49
			4	0.8	9.7 (530)		
			5	0.5	14.4 (785)		
			7	0.2	24.8 (1354)		
			10	0.1	37.8 (2061)		
VCB4	4	1/4 (8A) 3/8 (10A) 1/2 (15A) 3/4 (20A)	3	3.0	6.3 (344)	3.0	1/4: 0.58 3/8: 0.55 1/2: 0.62 3/4: 0.78
			4	1.3	10.8 (589)		
			5	0.7	15.3 (834)		
			7	0.3	24.8 (1354)		
			10	0.12	37.8 (2061)		

Note 1) Refer to model selection on page 5 regarding port size and orifice size combinations.

Construction

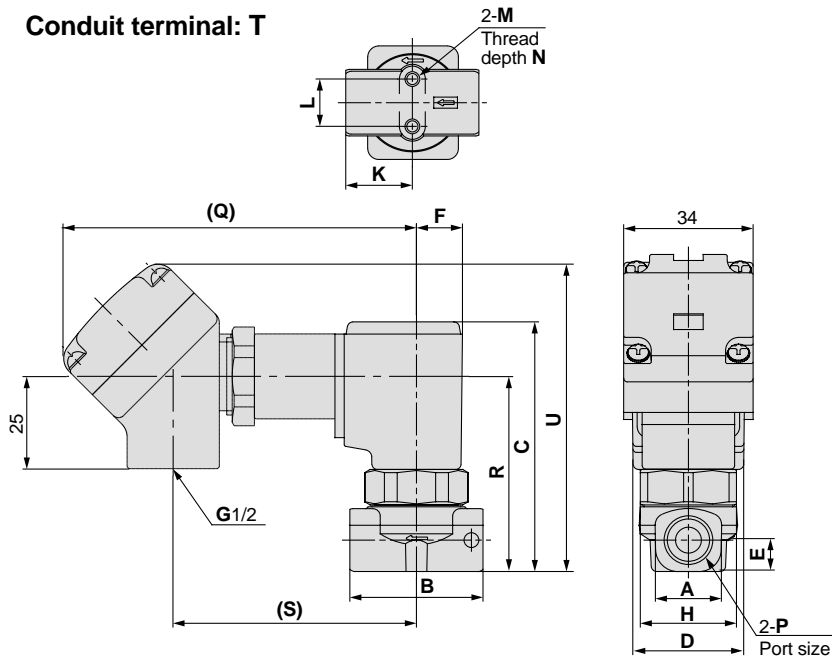


Parts list

No.	Description	Material
		Standard
1	Clip	Stainless steel
2	Core assembly	Stainless steel/Cu
3	Coil assembly	Class H
4	Armature assembly	Stainless steel/FKM (EPDM)
5	Seal	FKM (EPDM)
6	Return spring	Stainless steel
7	Body	CAC406 (stainless steel)

Dimensions

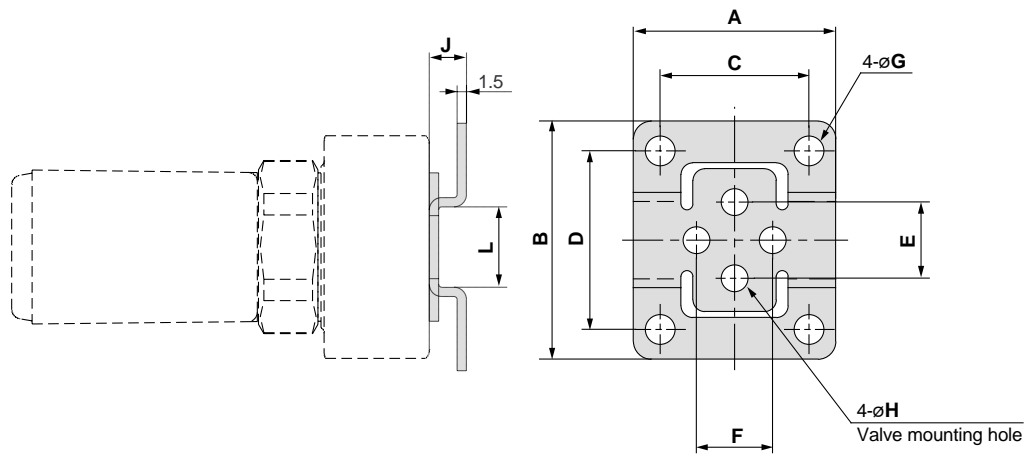
Conduit terminal: T



(mm)

Model	P Port size	A	B	C	D	E	F	H	K	L	M	N	Electrical entry			
													Conduit terminal: T			
													Q	R	S	U
VCB21	1/8	13.5	28	64	31	6.5	12.5	28	14	12.8	M4	4.5	99	50	66	83
	1/4	18	36	67.5	31	8.5	12.5	28	18	12.8	M4	6	99	53	66	86
VCB31	1/4, 3/8	22	40	81.5	36.5	11	15	32	20	19	M5	8	101	66.5	68	99
	1/2	30	50	86	36.5	13.5	15	32	25	23	M5	8	101	71	68	104
VCB41	1/4, 3/8	22	45	90	41	11	17	36	22.5	23	M5	8	103	74.5	70	107
	1/2	30	50	94	41	13.5	17	36	25	23	M5	8	103	78.5	70	111.5
	3/4	35	60	102	41	17.5	17	36	30	28.2	M5	8	103	86.5	70	119

Bracket Dimensions



Bracket material: Stainless steel

Bracket mounting dimensions

(mm)

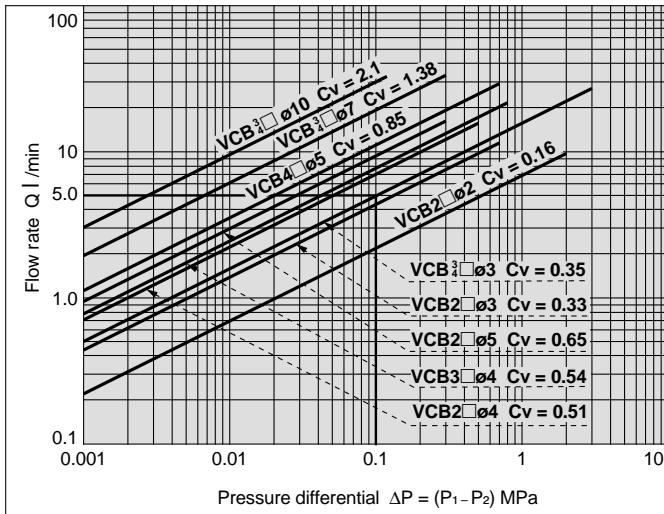
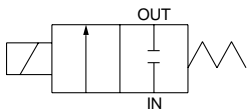
Valve model	Port size	Bracket part no.	A	B	C	D	E	F	G	H	J	L
VCB2□	1/8, 1/4	VCW20-12-01A	34	40	25	30	12.8	12.8	5	4.5	6	13
VCB3□	1/4, 3/8	VCW30-12-02A	42	52	30	40	19	19	6	5.5	7	19
	1/2	VCW30-12-04A	48	56	36	44	23	23	6	5.5	7	23
VCB4□	1/4, 3/8	VCW40-12-02A	42	52	30	40	23	23	6	5.5	7	19
	1/2	VCW30-12-04A	48	56	36	44	23	23	6	5.5	7	23
	3/4	VCW40-12-06A	56	65	44	53	28.2	28.2	6	5.5	7	26

* Two mounting screws (for mounting bracket) are included with the above parts.

Model Selection

VCB (for heated water) 2 port solenoid valve

Model	Material		Class	Port size	Orifice size mmø					
	Body	Seal			2	3	4	5	7	10
VCB (for heated water) 2 port solenoid valve	CAC406 (SUS)	FKM (EPDM)	2	1/8 (6A)	●	●	●	●	—	—
				1/4 (8A)	●	●	●	●	—	—
			3	1/4 (8A)	—	●	●	●	●	—
				3/8 (10A)	—	●	●	●	●	●
				1/2 (15A)	—	—	—	—	—	●
			4	1/4 (8A)	—	●	●	●	●	—
				3/8 (10A)	—	●	●	●	●	●
				1/2 (15A)	—	—	—	—	—	●
				3/4 (20A)	—	—	—	—	—	●



Viewing the graph

To generate a water flow of 5 l/min at a differential pressure of 0.1MPa, an effective area with Cv factor 0.35 (VCB3 ø3, ø3) or more is required.

How to find the flow rate for water

- Formula based on Cv factor
 $Q = 14.2 \cdot Cv \cdot \sqrt{10.2 \cdot \Delta P} \dots \text{ l/min}$
- Formula based on effective area (Smm²)
 $Q = 0.8 \cdot S \cdot \sqrt{10.2 \cdot \Delta P} \dots \text{ l/min}$

Q: Flow rate (l/min)
 ΔP: Pressure differential (P₁ - P₂)
 P₁: Upstream pressure (MPa)
 P₂: Downstream pressure (MPa)
 S: Effective area (mm²)
 Cv: Cv factor

Explanation of Terminology

Pressure Terminology

1. Maximum operating pressure differential

This indicates the maximum pressure differential (the difference between the upstream and downstream pressure) which can be allowed for operation with the valve closed or open. When the downstream pressure is 0MPa, this becomes the maximum operating pressure.

2. Maximum operating pressure

This indicates the upper limit of pressure that can be applied inside the pipelines (line pressure).

(The pressure differential of the solenoid valve unit must be no more than the maximum operating pressure differential.)

3. Proof pressure

The pressure which must be withstood without deterioration in performance when the valve returns to the operating pressure range (the value under the specified conditions).

Electrical Terminology

1. Surge voltage

A high voltage which is momentarily generated in the shut-off unit by shutting off the power.

Other

1. Materials


- FKM: Fluoro rubber – Trade names: Viton®, Dai-el®, etc.
- EPDM: Ethylene propylene rubber
- CAC406: Bronze (BC6)
- C37: Brass
- SUS: Stainless steel





Series VCB

Safety Instructions

These safety instructions are intended to prevent a hazardous situation and/or equipment damage. These instructions indicate the level of potential hazard by a label of "**Caution**", "**Warning**" or "**Danger**". To ensure safety, be sure to observe ISO 4414 Note 1) and other safety practices.

 **Caution** : Operator error could result in injury or equipment damage.

 **Warning** : Operator error could result in serious injury or loss of life.

 **Danger** : In extreme conditions, there is a possible result of serious injury or loss of life.

Note 1) ISO 4414 : Pneumatic fluid power – Recommendations for the application of equipment to transmission and control systems

Warning

1. The compatibility of equipment is the responsibility of the person who designs the system or decides its specifications.

Since the products specified here are used in various operating conditions, their compatibility for the specific system must be based on specifications or after analysis and/or tests to meet your specific requirements. Be particularly careful in determining the compatibility of the fluid to be used.

2. Only trained personnel should operate machinery and equipment.

The fluid can be dangerous if handled incorrectly. Assembly, handling or repair of systems should be performed by trained and experienced operators.

3. Do not service machinery/equipment or attempt to remove components until safety is confirmed.

1. Inspection and maintenance of machinery/equipment should only be performed after confirmation of safe locked-out control positions and measures to prevent danger from the fluid.
2. When equipment is to be removed, confirm the safety process as mentioned above, release fluid pressure and be certain there is no danger from fluid leakage or fluid remaining in the system.
3. Restart machinery carefully, confirming that safety measures are being implemented.

4. Contact SMC if the product is to be used in any of the following conditions:

1. Conditions and environments beyond the given specifications, or if product is used outdoors.
2. With fluids whose application causes concern due to the type of fluid or additives, etc.
3. An application which has the possibility of having negative effects on people, property, or animals, requiring special safety analysis.



Series VCB

2 Port Solenoid Valve for Fluid Control Precautions 1

Be sure to read before handling.

Design

⚠ Warning

1. Cannot be used as an emergency shutoff valve, etc.

The valves presented in this catalog are not designed for safety applications such as an emergency shutoff valve. If the valves are used in this type of system, other reliable safety assurance measures should also be adopted.

2. Extended periods of continuous energization

Consult SMC if valves will be continuously energized for extended periods of time.

3. Liquid seals

In cases with a flowing liquid, provide a by-pass valve in the system to prevent the liquid from entering the liquid seal circuit.

4. This solenoid valve cannot be used for explosion proof applications.

5. Maintenance space

The installation should allow sufficient space for maintenance activities.

Selection

⚠ Warning

1. Confirm the specifications.

Give careful consideration to operating conditions such as the application, fluid and environment, and use within the operating ranges specified in this catalog.

2. Fluid temperature

Operate within the prescribed fluid temperature range. The temperature range changes depending on the seal material, coil insulation and the type of power supply, etc.

3. Fluid quality

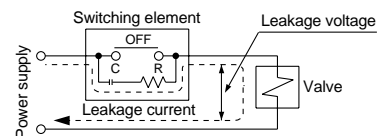
The use of fluid which contains foreign matter can cause problems such as malfunction and seal failure by promoting wear of the valve seat and armature, and by sticking to the sliding parts of the armature, etc. Install a suitable filter (strainer) immediately upstream from the valve. As a general rule, use 80 to 100 mesh.

When used to supply water to boilers, substances such as calcium and magnesium which generate hard scale and sludge are included. Since this scale and sludge can cause valve malfunction, install water softening equipment, and a filter (strainer) directly upstream from the valve to remove these substances.

⚠ Caution

1. Leakage voltage

Particularly when using a resistor in parallel with a switching element and using a C-R element (surge voltage suppressor) to protect the switching element, take note that leakage current will flow through the resistor and C-R element, etc., creating a danger that the valve may not shut OFF.



AC coil

10% or less of rated voltage

2. Low temperature operation

1. The valve can be used at ambient temperatures as low as -20°C , but take measures to prevent freezing or solidification of impurities, etc.
2. When used in cold areas, adopt freeze prevention measures such as draining the water from pipelines. If warmed with a heater, etc., avoid the coil unit. Also, implement warming or other freeze prevention measures for the body.



Series VCB

2 Port Solenoid Valve for Fluid Control Precautions 2

Be sure to read before handling.

Mounting

⚠ Warning

1. If air leakage increases or equipment does not operate properly, stop operation.

After mounting is completed, confirm that it has been done correctly by performing a suitable function test.

2. Do not apply external force to the coil section.

When tightening is performed, apply a wrench or other tool to the outside of the piping connection parts.

3. Do not warm the coil assembly with a heat insulator, etc.

Use tape and heaters, etc., for freeze prevention on the piping and body only. They can cause burn out of the coil.

4. Secure with brackets, except in the case of steel piping and copper fittings.

5. Avoid sources of vibration, or adjust the arm from the body to the minimum length so that resonance will not occur.

6. Instruction manual

Mount the product after reading the manual carefully and understanding its contents. Also keep the manual where it can be referred to as necessary.

7. Painting and coating

Warnings or specifications printed or pasted on the product should not be erased, removed or covered up.

Piping

⚠ Caution

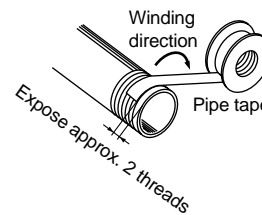
1. Preparation before piping

Before piping is connected, it should be thoroughly blown out with air (flushing) or washed to remove chips, cutting oil and other debris from inside the pipe.

2. Wrapping of pipe tape

When connecting pipes and fittings, etc., be sure that chips from the pipe threads and sealing material do not get inside the valve.

Furthermore, when pipe tape is used, leave 1.5 to 2 thread ridges exposed at the end of the threads.



3. Avoid connection of ground lines to piping, as this may cause electric corrosion of the system.

4. Always tighten threads with the proper tightening torque.

When screwing fittings into valves, tighten with the proper tightening torque shown below.

Tightening torque for piping

Connection threads	Proper tightening torque N·m
Rc 1/8	7 to 9
Rc 1/4	12 to 14
Rc 3/8	22 to 24
Rc 1/2	28 to 30
Rc 3/4	28 to 30

5. Connection of piping to products

When connecting piping to a product, refer to its instruction manual to avoid mistakes regarding the supply port, etc.

Furthermore, be sure to hold the product with a tool such as a wrench when tightening.



Series VCB

2 Port Solenoid Valve for Fluid Control Precautions 3

Be sure to read before handling.

Wiring

⚠ Caution

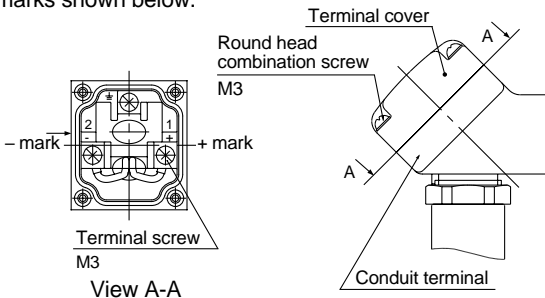
1. As a rule, use electrical wire with a cross sectional area of 0.5 to 1.25mm² for wiring. Furthermore, do not allow excessive force to be applied to the lines.
2. Use electrical circuits which do not generate chattering in their contacts.
3. Use voltage which is within $\pm 10\%$ of the rated voltage. In cases with a DC power supply where importance is placed on responsiveness, stay within $\pm 5\%$ of the rated value. The voltage drop is the value in the lead wire section connecting the coil.
4. When surge from the solenoid affects the electrical circuitry, install a surge absorber, etc., in parallel with the solenoid.

Electrical Connections

⚠ Caution

Conduit terminal

In the case of the conduit terminal, make connections according to the marks shown below.

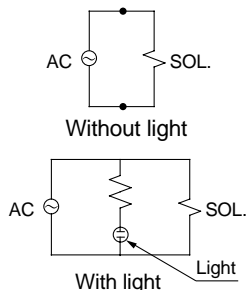


View A-A
(Internal connection diagram)
* Tighten the terminal cover screws and terminal screws with a torque of 0.5N·m.

Electrical Circuits

⚠ Caution

Conduit terminal



Operating Environment

⚠ Warning

1. Do not use valves in atmospheres of corrosive gases, chemicals, salt water, water, or where there is direct contact with any of these.
2. Do not use in explosive atmospheres.
3. Do not use in locations subject to vibration or impact.
4. Do not use in locations where radiated heat will be received from nearby heat sources.
5. Employ suitable protective measures in locations where there is contact with water droplets, oil or welding spatter, etc.

Maintenance

⚠ Warning

1. Perform maintenance in accordance with the procedures in the instruction manual.

Improper handling can cause damage or malfunction of machinery and equipment, etc. In addition, perform maintenance inspections once every six months to ensure optimum performance.

2. Removing the product

The valve will reach a high temperature when used with high temperature fluids. Confirm that the valve temperature has dropped sufficiently before performing work. If touched inadvertently, there is a danger of being burned.

Removal

1. Shut off the fluid supply and release the fluid pressure in the system.
2. Shut off the power supply.
3. Demount the product.

3. Low frequency operation

Switch valves at least once every 30 days to prevent malfunction.

⚠ Caution

1. Filters and strainers

1. Be careful regarding clogging of filters and strainers.
2. Replace filter elements after one year of use, or earlier if the pressure drop reaches 0.1MPa.
3. Clean strainers when the pressure drop reaches 0.1MPa.

2. Storage

In case of long term storage after use with heated water, first thoroughly remove all moisture to prevent rust and deterioration of rubber materials, etc.

Operating Precautions

⚠ Warning

1. Valves will reach high temperatures from high temperature fluids. Use caution, as there is a danger of being burned if a valve is touched directly.
2. Valves may reach high temperatures when continuously energized. Use caution, as there is a danger of being burned if a valve is touched directly.



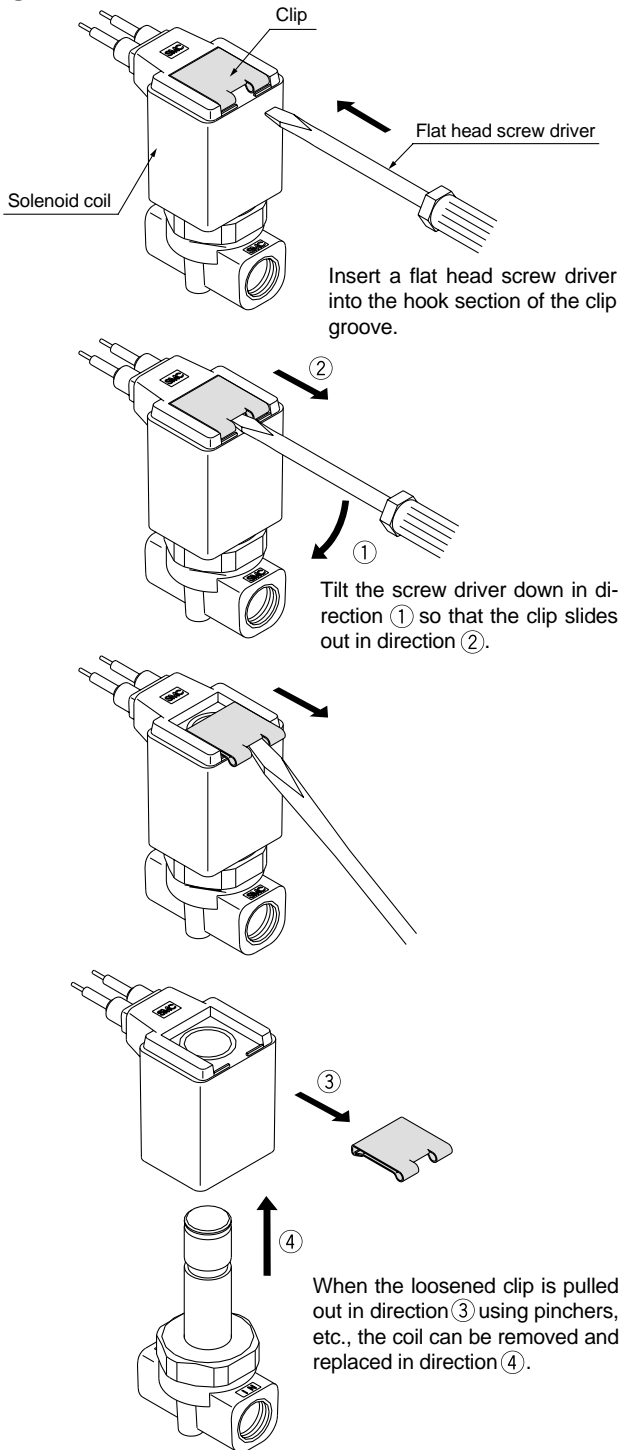
Series VCB Specific Product Precautions

Be sure to read before handling. Refer to pages 7 through 10 for safety instructions and precautions of 2 port solenoid valve for fluid control.

Replacing the Solenoid Coil

Caution

The valve will reach high temperatures from high temperature fluids such as heated water. Confirm that the valve has cooled sufficiently before performing work. If touched inadvertently, there is a danger of being burned.



After replacing the coil, the clip is reinstalled by pushing it back in the direction opposite to its removal.

Replacement Parts

Solenoid coil part numbers

VCS 20 1 G

Series	
20	Class 2
30	Class 3
40	Class 4

Voltage	
1	100VAC
2	200VAC
3	110VAC
4	220VAC
36	230VAC

Lead wire length	
Nil	300mm
L1	600mm
L2	1000mm
L3	1500mm
L4	3000mm

Note) Grommet type only

Electrical entry

T	With conduit terminal
TL	With conduit terminal/light

Clip part numbers

AZ-T-VCB

How to Order Valves → Page 1 Valve model

Note) Indicate the valve model, as a label will be attached to the clip.

Seal part numbers

Valve

For VCB20

OR-1860-120-**F**

F: FKM
E: EPDM

For VCB30

OR-2380-130-**F**

F: FKM
E: EPDM

For VCB40

OR-2600-180-**F**

F: FKM
E: EPDM

If external leakage occurs after replacing the coil, replace the above seals.

**Austria**

SMC Pneumatik GmbH (Austria).
Girakstrasse 8, A-2100 Körneuburg
Phone: 02262-62280, Fax: 02262-62285

**Belgium**

SMC Pneumatics N.V./S.A.
Nijverheidsstraat 20, B-2160 Wommelgem
Phone: 03-355-1464, Fax: 03-355-1466

**Czech**

SMC Czech.s.r.o.
Kodanska 46, CZ-100 10 Prague 10
Phone: 02-67154 790, Fax: 02-67154 793

**Denmark**

SMC Pneumatik A/S
Jens Juuls vej 32, DK-8260 Viby J
Phone: 45-70252900, Fax: 45-70252901

**Estonia**

Teknoma Eesti AS
Mustamäe tee 5, EE-0006 Tallinn, Estonia
Phone: 259530, Fax: 259531

**Finland**

SMC Pneumatikka OY
Veneentekijäntie 7, SF-00210 Helsinki
Phone: 09-681021, Fax: 09-6810233

**France**

SMC Pneumatique, S.A.
1, Boulevard de Strasbourg, Parc Gustave Eiffel
Bussy Saint Georges
F-77607 Marne La Vallée Cedex 3
Phone: 01-6476 1000, Fax: 01-6476 1010

**Germany**

SMC Pneumatik GmbH
Boschring 13-15, D-63329 Egelsbach
Phone: 06103-4020, Fax: 06103-402139

**Greece**

S. Parianopoulos S.A.
9, Konstantinoupolos Street,
GR-11855 Athens
Phone: 01-3426076, Fax: 01-3455578

**Hungary**

SMC Hungary Kft.
Budafoki ut 107-113, 1117 Budapest
Phone: 01-204 4366, Fax: 01-204 4371

**Ireland**

SMC Pneumatics (Ireland) Ltd.
2002 Citywest Business Campus,
Naas Road, Saggart, Co. Dublin
Phone: 01-403 9000, Fax: 01-464 0500

**Italy**

SMC Italia S.p.A
Via Garibaldi 62, I-20061 Carugate, (Milano)
Phone: 02-92711, Fax: 02-92150394

**Latvia**

Ottensten Latvia SIA
Ciekurkalna Prima Gara Linija 11,
LV-1026 Riga, Latvia
Phone: 371-23-68625, Fax: 371-75-56748

**Lithuania**

UAB Ottensten Lietuva
Savanoriu pr.180, LT-2600 Vilnius, Lithuania
Phone/Fax: 370-2651602

**Netherlands**

SMC Pneumatics BV
Postbus 308, 1000 AH Amsterdam
Phone: 020-5318888, Fax: 020-5318880

**Norway**

SMC Pneumatics (Norway) A/S
Wollsveien 13 C, granfoss Noeringspark
N-134 Lysaker, Norway
Phone: 22 99 6036, Fax: 22 99 6103

**Poland**

Semac Co., Ltd.
PL-05-075 Wesola k/Warszaway, ul. Wspolna 1A
Phone: 022-6131847, Fax: 022-613-3028

**Portugal**

SMC España (Sucursal Portugal), S.A.
Rua de Engº Ferreira Dias 452, 4100 Porto
Phone: 02-610-89-22, Fax: 02-610-89-36

**Romania**

SMC Romania srl
Vasile Stroescu 19, Sector 2, Bucharest
Phone: 01-210-1354, Fax: 01-210-1680

**Russia**

SMC Pneumatik LLC
Centrako Business Centre 103,
Bolshoy Prospect V.O., 199106 St. Petersburg
Phone: 812-1195131, Fax: 812-1195129

**Slovakia**

SMC Slovakia s.r.o.
Pribinova ul. C. 25, 819 02 Bratislava
Phone: 0-563 3548, Fax: 07-563 3551

**Slovenia**

SMC Slovenia d.o.o.
Grajski trg 15, 8360 Zuzemberk
Phone: 068-88 044 Fax: 068-88 041

**Spain**

SMC España, S.A.
Zuazobidea 14, Pol. Ind. Jundiz,
E-01015 Vitoria
Phone: 945-184 100, Fax: 945-184 124

**Sweden**

SMC Pneumatics Sweden A.B.
Ekhagsvägen 29-31, S-14105 Huddinge
Phone: 08-603 07 00, Fax: 08-603 07 10

**Switzerland**

SMC Pneumatik AG
Dorfstrasse 7, CH-8484 Weisslingen
Phone: 052-396-3131, Fax: 052-396-3191

**Turkey**

Entek Pnömatik San. ve Tic Ltd. Sti.
Perpa Tic. Merkezi Kat: 11 No: 1625,
TR-80270 Okmeydanı Istanbul
Phone: 0212-221-1512, Fax: 0212-220-2381

**UK**

SMC Pneumatics (UK) Ltd
Vincent Avenue, Crownhill,
Milton Keynes, MK8 0AN
Phone: 01908-563888 Fax: 01908-561185

OTHER SUBSIDIARIES WORLDWIDE:

ARGENTINA, AUSTRALIA, BOLIVIA, BRASIL, CANADA, CHILE, CHINA, HONG KONG, INDIA, MALAYSIA, MEXICO, NEW ZEALAND, PHILIPPINES, SINGAPORE, SOUTH KOREA, TAIWAN, THAILANDIA, USA, VENEZUELA

For more information, please contact your local SMC Regional Centre

SMC UK Contact Numbers

Head Office: SMC Pneumatics (UK) Ltd, Vincent Avenue, Crownhill, Milton Keynes MK8 0AN

THE NATIONAL SALES CENTRE FOR ENGLAND & WALES**Internal Sales****(Price, Delivery Information & Order Placement)**

Freephone: 0800 138 2930 Fax: 01908 555064

e-mail: sales@smcpneumatics.co.uk

Customer Services**(Post-Order Resolution)**

Freephone: 0800 138 2931 Fax: 01908 555065

e-mail: customerservice@smcpneumatics.co.uk

TECHNICAL CENTRE

Freephone: 0800 138 2932 Fax: 01908 555066

e-mail: technical@smcpneumatics.co.uk

SMC FAST RESPONSE**(Literature & Catalogue Requests)**

0800 0262006

SMC SALES CENTRE FOR SCOTLAND & N. IRELAND

Tel: 01236 781133 Fax: 01236 780611

SMC Pneumatics (UK) Ltd, 1 Carradale Crescent, Broadwood Business Park, Cumbernauld, Glasgow G69 9LE

SMC UK Distributors

Birmingham
JAMES LISTER
Tel: 0121 5803800
Fax: 0121 5535951

Bristol
APPLIED AUTOMATION
Tel: 0117 9827769
Fax: 0117 9235522

Cardiff
WALES FLUID POWER
Tel: 02920 494551
Fax: 02920 481955

Blackburn
BLACKBURN PNEUMATIC SYSTEMS LTD
Tel: 01254 682232
Fax: 01254 682224

Bury St Edmunds
PNEUMATIC LINES
Tel: 01284 706239
Fax: 01284 761218

Plymouth
APPLIED AUTOMATION
Tel: 01752 343300
Fax: 01752 341161