

Vacuum System Peripherals: Pressure Gauge for Vacuum: Series GZ46



GZ46

GZ46-2

⚠️ Precautions

Be sure to read before handling. Refer to pages 13-15-3 to 13-15-4 for Safety Instructions and Common Precautions on the products mentioned in this catalog, and refer to page 13-1-5 for Precautions on every series.

Selection

⚠️ Caution

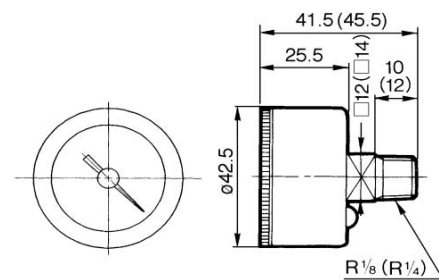
- Do not expose the gauge to shocks or vibrations.
- Please contact SMC if the gauge is exposed to pressure pulsations or high frequency operation.

Mounting

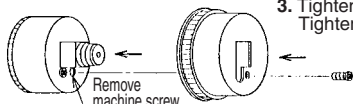
⚠️ Caution

- During transport and installation, make sure the gauge is not exposed to shock, such as dropping, to maintain precision.
- To ensure the proper posture of the gauge, the zero point of the graduation on the gauge must face downward and perpendicular to the ground.
- Do not install the gauge in an area that is exposed to high temperatures or humidity.
- When attaching the pressure gauge, make sure to place a wrench directly on the squared off portion. If a force is applied to some other area to screw in the gauge, it could cause the gauge to leak or to become damaged.

Dimensions



How to install cover assembly



(): Port size is R

Specifications

Model		GZ46	GZ46E
Type		Back screw	
Connecting (1)		R 1/8 R 1/4 (Option: M = with M5 x thread)	
Fluid (2)		Air	
Indication accuracy		±3%	
Parts washing		—	Wetted parts degrease washing
Material	Case (Surface treatment)	Rolled steel (Black melamine coating)	
	Clear cover (Surface treatment)	Polycarbonate	Polycarbonate (Hard coated)
		Part no: G46-00-00-3	Part no: G46-00-00-2
	Body	Brass	Brass (Electroless nickel plated)
	Bourdon tube	Brass	
With attachment cover assembly	C	Part no: 1305104-1A	
	C1	Part no: 1305104-3A	

Note 1) When attaching the pressure gauge, make sure not to fasten excessively, since it could cause the gauge to leak or to become damaged.

Use port tape as sealant. Recommended fastening torque = R 1/8: 7 to 9 N·m, R 1/4: 12 to 14 N·m.

Note 2) Please consult with SMC if other fluids are used, a corrosive problem may result.

Mobile parts (gear, etc) inside the pressure gauge is made of brass.

How to Order

GZ 46 E - K 1 K - 01 M - C

Pressure gauge for vacuum Model		Specifications		Pressure unit for vacuum		Option	
Symbol	O.D.	Symbol	Specifications	Symbol	Unit	Symbol	Specifications
46	ø42.5	Nil	—	K	kPa	Nil	—
		E	External parts oil-free Copper-free			M	M5 (Female thread)
Pressure unit for positive pressure		Display pressure range		Connecting		Attachment (Covering assembly)	
Symbol	Unit	Symbol	Unit: kPa	Symbol	Size	Symbol	Specifications
Nil	—	Nil	-100 to 0	01	R 1/8	Nil	Without covering assembly
K	(kPa)	1	-100 to 100	02	R 1/4	C	Clear cover has no protrusion (Clear cover is irremovable.)
		2	-100 to 200			C1	Clear cover has no protrusion (Clear cover is irremovable.)

Note) X3 (wetted parts) is not stainless steel specifications.

Model (Stock item)

Model	Pressure range (Note) (kPa)	Unit	Connecting	Note
GZ46-K-01 to 02	-100 to 0	kPa	R 1/8, 1/4	—
GZ46-K-01 to 02-C, C1	-100 to 0	kPa	R 1/8, 1/4	With covering assembly
GZ46-K-01 to 02M	-100 to 0	kPa	R 1/8, 1/4 M5 (Female thread)	—
GZ46E-K-01 to 02M	-100 to 0	kPa	R 1/8, 1/4 M5 (Female thread)	—
GZ46-K2K-01 to 02	-100 to 200	kPa	R 1/8, 1/4	—

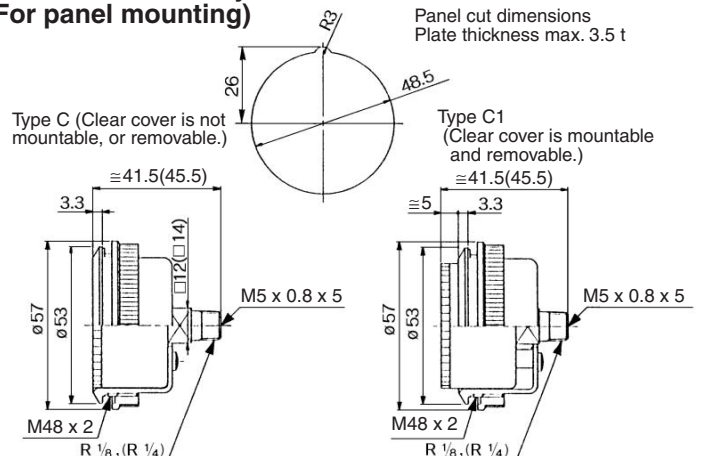
Note) Do not apply pressure that exceeds max. display pressure, since it would cause the gauge to malfunction.

Model (Made to order)

Model	Pressure range (Note) (kPa)	Unit	Connecting	Note
GZ46-K1K-01 to 02	-100 to 100	kPa	R 1/8, 1/4	—

Note) Do not apply pressure that exceeds max. display pressure, since it would cause the gauge to malfunction.

With cover assembly (For panel mounting)



Panel cut dimensions
Plate thickness max. 3.5 t

Type C (Clear cover is not mountable, or removable.)

Type C1 (Clear cover is mountable and removable.)