

Pressure Gauge Guide

Gauge with Switch

GP46

O.D.: $\phi 42$



- A pressure switch function has been added to the gauge
- The pressure switch is equipped with a light for verifying operation.
- The pressure gauge is equipped with a limit indicator.
- To be used for verifying the supply pressure.

Standard Specifications

Gauge	Fluid	Air
	Ambient and fluid temperature	-5 to 60°C (Non-freezing)
	Indicated pressure range	0 to 1.0MPa(0 to 10kgf/cm ²)
	Port size	R(PT) 1/8, 1/4
Pressure switch	Setting range ^{(1) (2)}	0.1 to 0.8MPa(1 to 8.5kgf/cm ²)
	Hysteresis	0.07MPa(0.7kgf/cm ²)
	Pointer error ⁽³⁾	± 0.05 MPa, ± 0.5 kgf/cm ² (5 to 40°C)
		± 0.08 MPa, ± 0.8 kgf/cm ² (-5 to 60°C) Non freezing
	Contact	With light: 1a, Without light: 1ab
	Wiring	Lead wire (length: 300mm)
	Indicator light	AC
DC		Light emitting diode (LED)
Weight		0.12kg

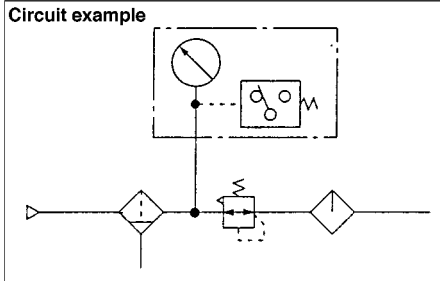


Note 1) Indicates the condition at the lower pressure limit.

Note 2) Make sure to provide a minimum difference of 0.1MPa between the set pressure and the operating pressure (including the pressure drop). If the difference is smaller, it could lead to improper operation. Refer to p.1.16-8 for details on how to set the setting needle.

Note 3) Maximum error value: Add the pressure gauge indicator error of ± 0.03 MPa to the setting needle error.

Circuit example



Micro switch rated voltage

Voltage	30V DC	125V AC	250V AC
Operating current range			
Load resistance	0.01 to 0.5A	0.01 to 0.3A	0.01 to 0.2A

How to Order

GP46 — 10 — 01 L2 — C

Indicated pressure range
0 to 1.0MPa.
0 to 10kgf/cm²

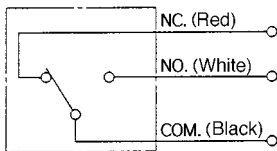
01	R(PT) ^{1/8}
02	R(PT) ^{1/4}
N01	NPT ^{1/8}
N02	NPT ^{1/4}

—	Without light
L2	Neon light/(110V AC/220V AC)
L5	LED/24V DC

—	Without cover ring ass'y
C	With cover ring ass'y

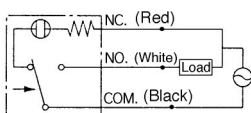
Circuit Diagram

Without light

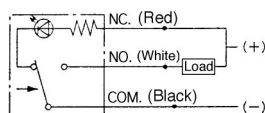


With light

110V AC/220V DC



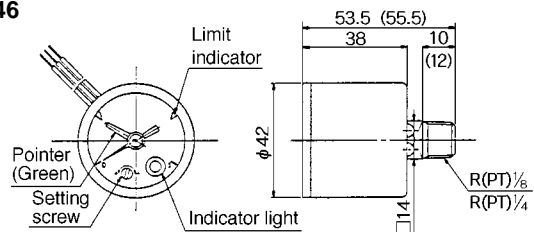
24V DC



The arrow in the diagram indicates the direction of the pressure increase. The light turns OFF when the pressure becomes higher than the set pressure and turns ON when the pressure becomes lower than the set pressure.

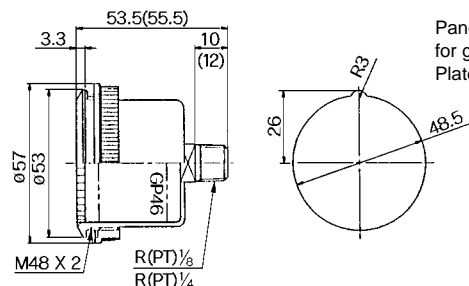
Dimensions

GP46



(): R(PT)^{1/4}

GP46: With cover ring assembly (for panel mounting)



Panel dimensions to be cut for gauge mounting
Plate thickness: Max. 3.5t



Refer to p.1.16-8 for mounting method.