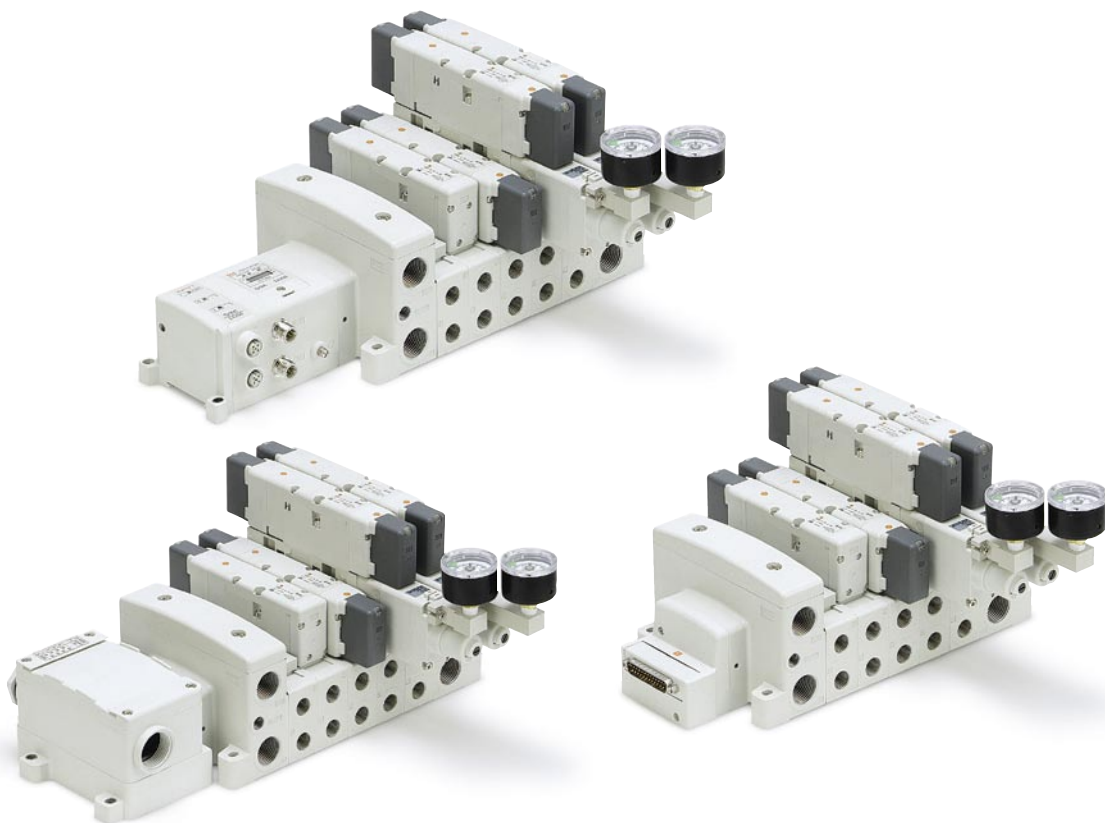


Conforming to ISO 15407-2 (Size 01) Plug-in type

Series *VSR8-4/VSS8-4*



ISO 15407-2 Interface

Size 01 (VSR/S8-4) Interface conforms to ISO 15407-2

Enclosure protection of IP65

Dust/Splashproof type

Light weight

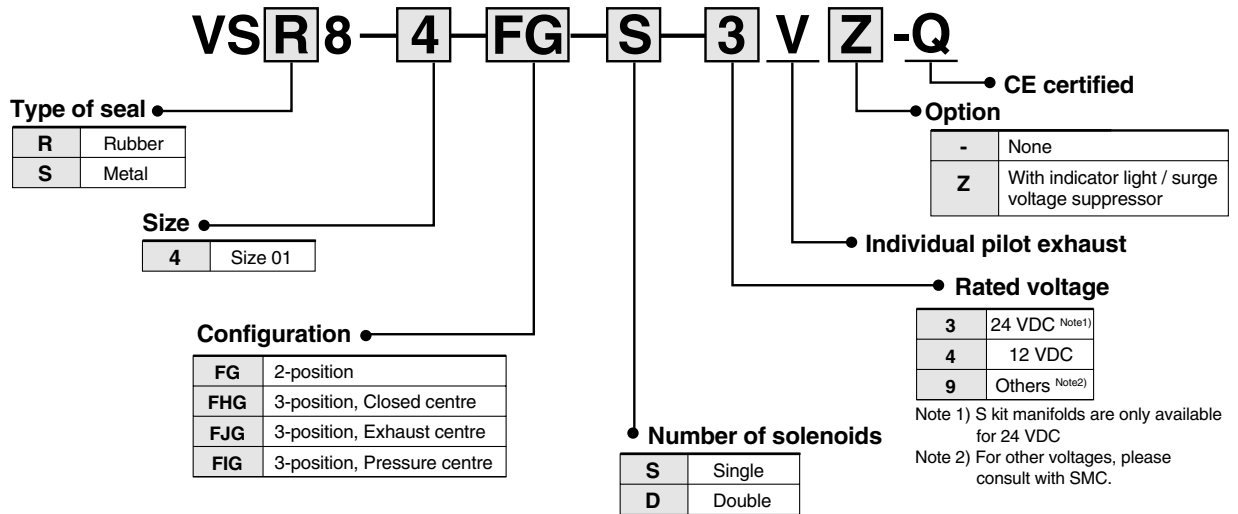
Size 01 (3-position): 0.26kg

Large capacity

Model	Flow rate	Cylinder driving size
<i>VSR/S8-4</i>	1000ℓ/min (ANR)	ø100

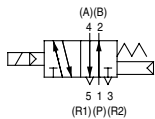
Series VSR/VSS8-4

How to Order Valve (ISO15407-2)

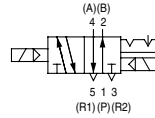


Symbol

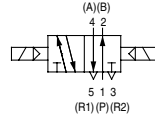
2-position single



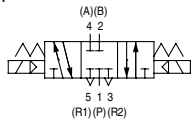
2-position double (metal)



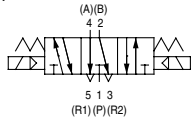
2-position double (rubber)



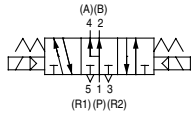
3-position closed centre



3-position exhaust centre



3-position pressure centre



Standard Specifications

Valve specifications	Valve type	Metal seal	Rubber seal	
	Fluid	Air, Inert gas		
Maximum operating pressure	1.0MPa			
Minimum operating pressure	Single	0.1MPa	0.15MPa	
	Double	0.1MPa	0.1MPa	
	3-position	0.15MPa	0.2MPa	
Ambient and fluid temperature	-10° to 60°C ^{Note 1)}	-5° to 60°C ^{Note 1)}		
Lubrication	Not required (non-lube type)			
Manual override	Push type (tool required)			
Impact resistance/Vibration resistance	150, 30ms ² ^{Note 2)}			
Enclosure	IP65 (Dust/Splashproof type)			
Electric specifications	Rated coil voltage	12VDC, 24VDC		
	Allowable voltage fluctuation	±10% of rated voltage		
	Type of coil insulation	Equivalent to class B		
	Power consumption (Current)	24VDC	1W DC (42mA)	
		12VDC	1W DC (83mA)	

Note 1) Use dry air to prevent condensation at low temperatures.

Note 2) **Impact resistance:** No malfunction resulted during an impact test using a drop impact tester. The test was performed one time each in the axial and right angle directions of the main valve and armature for both energised and de-energised conditions.

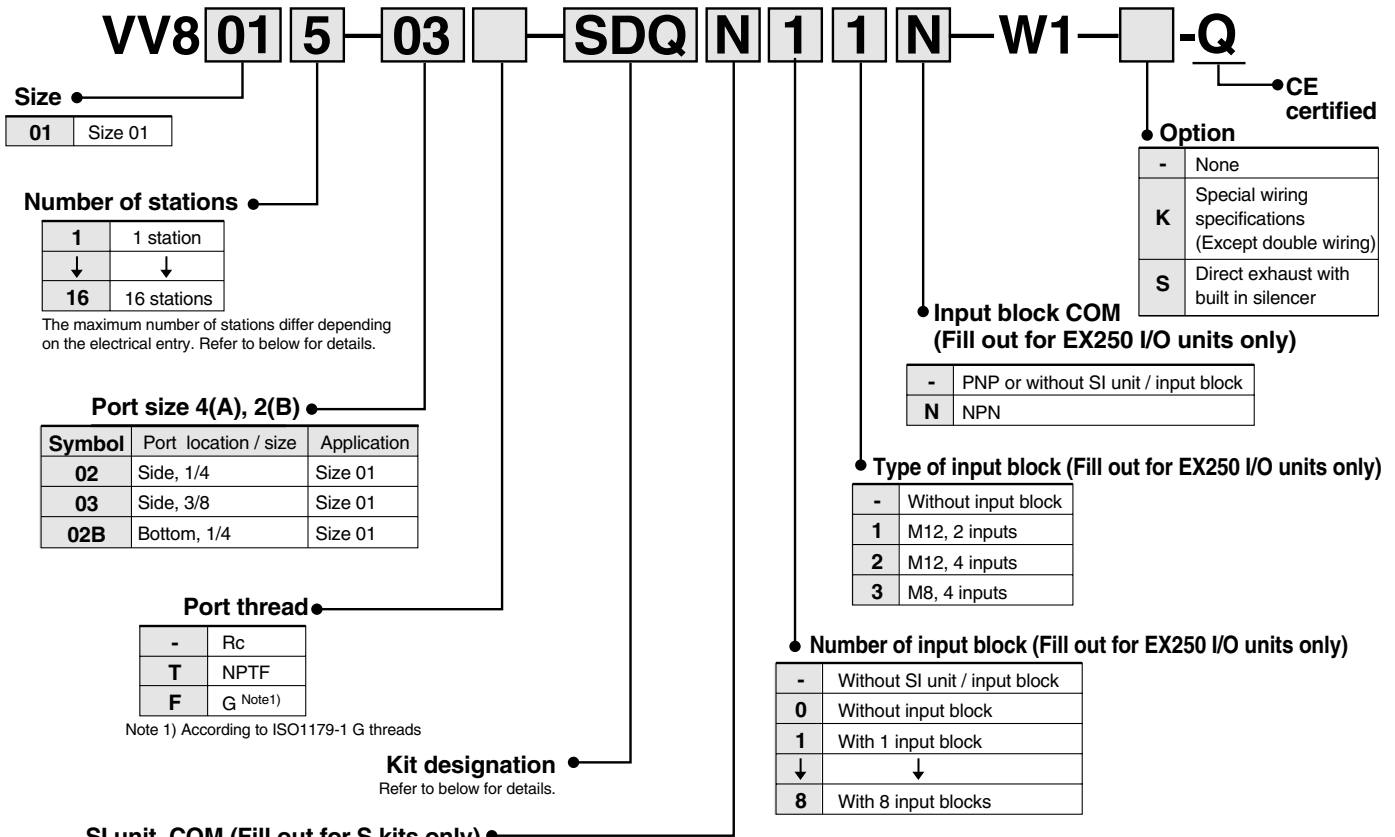
Vibration resistance: No malfunction resulted during a one-sweep test between 8.3 and 2000Hz. The test was performed in the axial and right angle directions of the main valve and armature for both energised and de-energised conditions.

Flow Rate Characteristics

Position	Seal	VSR/S8-4								
		1→4, 2 (P→A, B)				4, 2→5, 3 (A, B→EA, EB)				
		C	b	Cv	Q[l/min(ANR)]*	C	b	Cv	Q[l/min(ANR)]*	
2-position	Single	Metal	3.10	0.10	0.60	704	3.40	0.10	0.70	772
		Rubber	3.60	0.28	0.90	904	4.20	0.20	1.00	1006
	Double	Metal	3.10	0.10	0.60	704	3.40	0.10	0.70	772
		Rubber	3.60	0.28	0.90	904	4.20	0.20	1.00	1006
3-position	Closed centre	Metal	3.10	0.10	0.60	704	3.20	0.10	0.60	727
		Rubber	3.20	0.34	0.80	835	4.20	0.30	1.00	1068
	Exhaust centre	Metal	2.70	0.10	0.60	613	3.30	0.10	0.70	749
		Rubber	3.10	0.26	0.80	769	4.00	0.25	1.10	986
	Pressure centre	Metal	3.20	0.10	0.70	727	3.20	0.10	0.60	727
		Rubber	4.40	0.25	1.00	1085	3.60	0.25	1.00	888

Note 1) These values have been calculated according to the ISO 6358 and represent the flow rate measured in standard conditions at an upstream pressure of 0.6 MPa (relative pressure) and a differential of pressure of 0.1 MPa.

How to Order Manifold (ISO15407-2)



SI unit COM	EX250					EX500		EX126
	DeviceNet	PROFIBUS-DP	CC-LINK	AS-i	CANopen	DeviceNet PROFIBUS-DP CC-LINK	Remote I/O	CC-LINK
- +COM	—	—	○	—	—	○	○	○
N -COM	○	○	—	○	○	○	○	—

Kit designation

Kit	Kit / Cable length	Max. number of stations ^{Note 1)}	Max. number of solenoids ^{Note1)}	
F kit	FD0	D-sub connector kit (25P) without cable	1 to 12 stations (16 stations)	
	FD1	D-sub connector kit (25P) with 1.5m cable		
	FD2	D-sub connector kit (25P) with 3.0m cable		
	FD3	D-sub connector kit (25P) with 5.0m cable		
P kit	PD0	Flat ribbon cable kit (26P) without cable	1 to 12 stations (16 stations)	
	PD1	Flat ribbon cable kit (26P) with 1.5m cable		
	PD2	Flat ribbon cable kit (26P) with 3.0m cable		
	PD3	Flat ribbon cable kit (26P) with 5.0m cable		
L kit	LD0	Lead wire kit (25 core) 0.6m lead wire	1 to 12 stations (16 stations)	
	LD1	Lead wire kit (25 core) 1.5m lead wire		
	LD2	Lead wire kit (25 core) 3.0m lead wire		
M kit	MD0	Multiple connector kit (26P) without cable	1 to 12 stations (16 stations)	
	MD1	Multiple connector kit (26P) with 1.5m cable		
	MD2	Multiple connector kit (26P) with 3.0m cable		
	MD3	Multiple connector kit (26P) with 5.0m cable		
T kit	TD0	Terminal block box kit	1 to 10 stations (16 stations)	
S kit	SD0	Serial kit without SI unit	1 to 12 stations (16 stations)	
	SDN	EX250 Serial kit for PROFIBUS-DP		
	SDQ	EX250 Serial kit for DeviceNet		
	SDTA	EX250 Serial kit for AS-I, 8 in/out, 31 slave modes, 2 power supply systems	1 to 4 stations (8 stations)	8
	SDTB	EX250 Serial kit for AS-I, 4 in/out, 31 slave modes, 2 power supply systems	1 to 2 stations (4 stations)	4
	SDTC	EX250 Serial kit for AS-I, 8 in/out, 31 slave modes, 1 power supply systems	1 to 4 stations (8 stations)	8
	SDTD	EX250 Serial kit for AS-I, 4 in/out, 31 slave modes, 1 power supply systems	1 to 2 stations (4 stations)	4
	SDV	EX250 Serial kit for CC-LINK	1 to 12 stations (16 stations)	24
	SDY	EX250 Serial kit for CANopen		
	SDA1	EX500 Serial kit for Remote I/O		
	SDA2	EX500 Serial kit for DeviceNet, PROFIBUS-DP, CC-LINK	1 to 8 stations (16 stations)	16
	SDVB	EX126 Serial kit for CC-LINK		

Note 1) The numeral in parentheses indicates the maximum number of stations in case of special wiring specification. The maximum number of manifold stations is determined by the number of solenoids. Count 1 point for a single solenoid type and 2 points for a double solenoid type. Determine the number of stations so that the total number of solenoids are not more than the maximum number of points or solenoids. In case of special wiring specification, put the option symbol "-K".

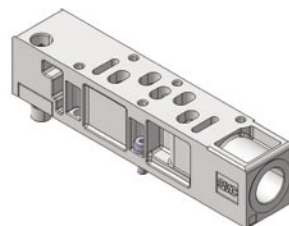
Series VSR/VSS8-4

Manifold Option

Individual SUP spacer: **VV801-P-03** 

Thread type

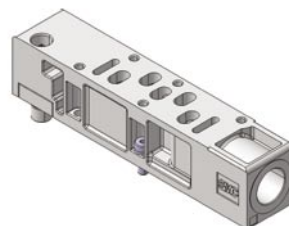
-	PT (Rc)
N	NPT
T	NPTF
F	G


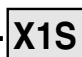


Individual EXH spacer: **VV801-R-03** 

Thread type

-	PT (Rc)
N	NPT
T	NPTF
F	G



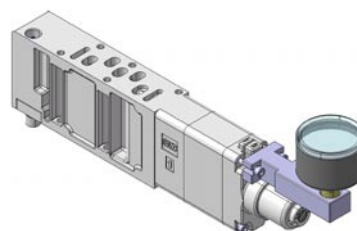
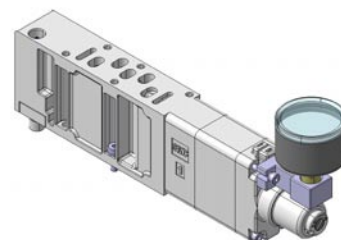
Interface regulator: **VVS8040-ARB-**  **-1-X1S** 

Regulation type

P	P port
A	A port
B	B port

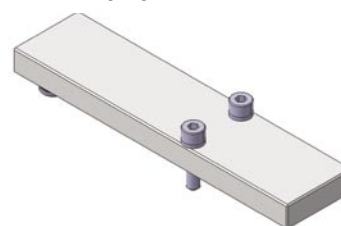
Pressure gauge adapter

X1S	Short
X1L	Long



* Pressure gauge indication unit: Bar/Psi

Blanking plate: **VVS8040-11A**



SMC CORPORATION (Europe)

Austria	☎ +43 226262280	www.smc.at	office@smc.at	Lithuania	☎ +370 5 264 81 26		
Belgium	☎ +32 (0)33551464	www.smc-pneumatics.be	post@smcpneumatics.be	Netherlands	☎ +31 (0)205318888	www.smc-pneumatics.nl	info@smcpneumatics.nl
Bulgaria	☎ +359 2 9744492	www.smc.bg	office@smc.bg	Norway	☎ +47 67129020	www.smc-norge.no	post@smc-norge.no
Croatia	☎ +385 1 377 66 74	www.smceu.com	office@smc.hr	Poland	☎ +48 225485085	www.smc.pl	office@smc.pl
Czech Republic	☎ +42 0541424611	www.smc.cz	office@smc.cz	Portugal	☎ +351 226108922	www.smces.es	postpt@smc.smces.es
Denmark	☎ +45 70252900	www.smc.dk.com	smc@smc-pneumatik.dk	Romania	☎ +40 213205111	www.smcromania.ro	smcromania@smcromania.ro
Estonia	☎ +372 (0)6593540	www.smc-pneumatics.ee	smc@smcpneumatics.ee	Russia	☎ +812 1185445	www.smc-pneumatik.ru	marketing@smc-pneumatik.ru
Finland	☎ +358 207 513513	www.smc.fi	smcfi@smc.fi	Slovakia	☎ +421 244456725	www.smc.sk	office@smc.sk
France	☎ +33 (0)164761000	www.smc-france.fr	contact@smc-france.fr	Slovenia	☎ +386 73885249	www.smc-ind-avtom.si	office@smc-ind-avtom.si
Germany	☎ +49 (0)61034020	www.smc-pneumatik.de	info@smc-pneumatik.de	Spain	☎ +34 945184100	www.smces.es	post@smc.smces.es
Greece	☎ +30 (0)13426076	www.smceu.com	parianos@hol.gr	Sweden	☎ +46 (0)86031200	www.smc.nu	post@smcpneumatics.se
Hungary	☎ +36 13711343	www.smc-automation.hu	office@smc-automation.hu	Switzerland	☎ +41 (0)523963131	www.smc.ch	info@smc.ch
Ireland	☎ +353 (0)14039000	www.smc-pneumatics.ie	sales@smcpneumatics.ie	Turkey	☎ +90 (0)2122211512	www.entek.com.tr	smc-entek@entek.com.tr
Italy	☎ +39 (0)292711	www.smcitalia.it	mailbox@smcitalia.it	UK	☎ +44 (0)8001382930	www.smc-pneumatics.co.uk	sales@smcpneumatics.co.uk
Latvia	☎ +371 (0)7779474	www.smc.lv	info@smclv.lv				

European Marketing Centre ☎ +34 945184100 www.smceu.com
SMC CORPORATION ☎ +81 0335022740 www.smcworld.com

SMC CORPORATION Akihabara UDX 15F, 4-14-1, Sotokanda, Chiyoda-ku, Tokyo 101-0021, JAPAN Phone: 03-5207-8249 FAX: 03-5298-5362