

DIG HEAVY
DRAINAGE PUMP

APPLICATIONS

Submersible pumps suitable for the removal of drainage abrasive water in :

Construction sites



- Underground water and rainwater
- Drill cuttings / Sand / Gravel
- Water out from cellars garage and basement

Industries



- Process water
- Abrasive water
- High pressure demand

APPLICATIONS

Mines and tunnels



- Underground water and rainwater
- Surface and ground water
- Drill cuttings / Sand / Gravel

Underground and pit dewatering (no Coal)



- Ground water and rainwater
- Surface and ground water
- Drill cuttings / Sand / Gravel

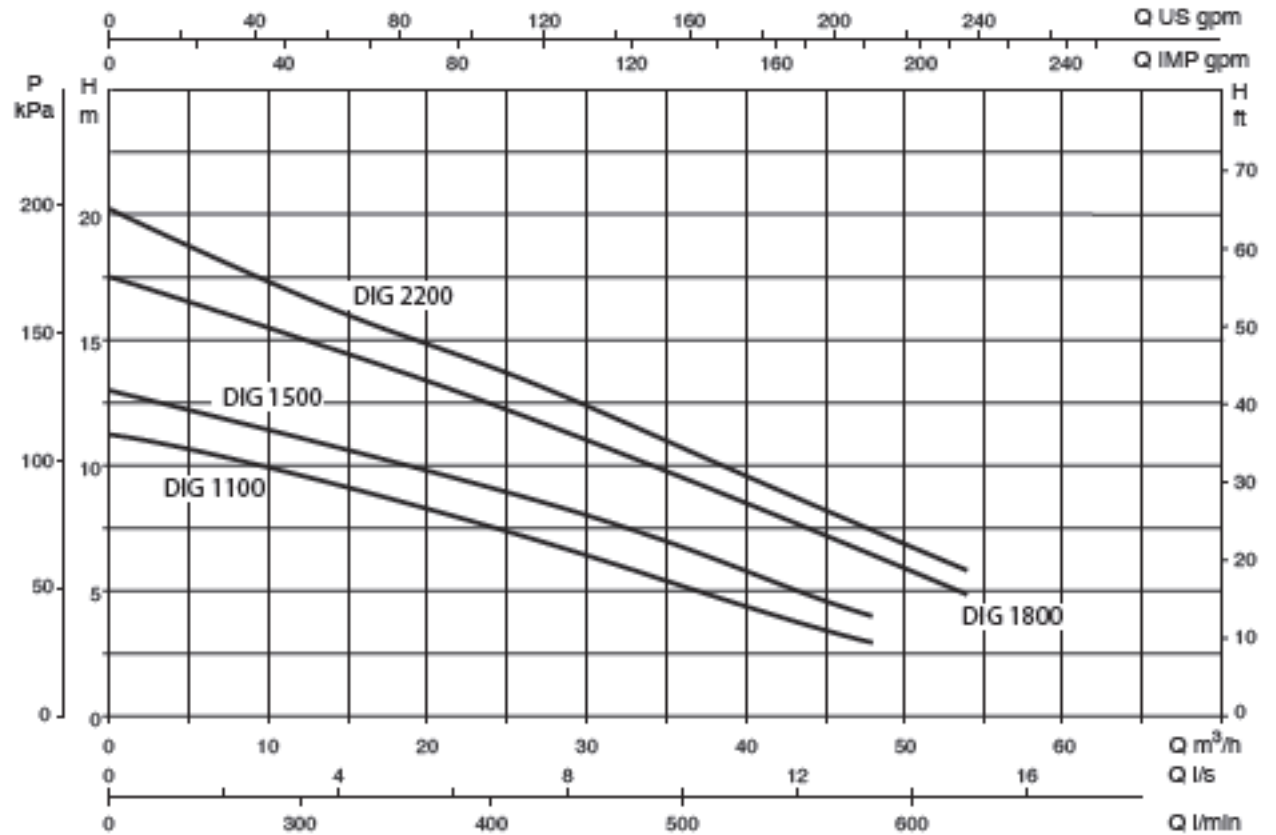
DIG 1100 – 1500 – 1800 - 2200

- Insulation class : F
- Motor protection level : IP 68
- Power from 1,1 KW up to 2,2 KW
- Rated speed 2800 rpm
- Rated voltage : 1 ~ 230 V ; 3 ~ 230, 400, 460, 525; 50 Hz
- N. starts / hour : max 15
- Integral capacitor in single phase version
- Discharge connection : 2"
- The single phase version can be equipped with float switch
- Continuous duty with completely immersed pump
- Flow up to 55 m³/h
- Head up to 20 m
- Free passage through the suction grid max 6 mm
- Liquid temperature range from 0° up to 35 °C
- Maximum immersion depth 10 meters

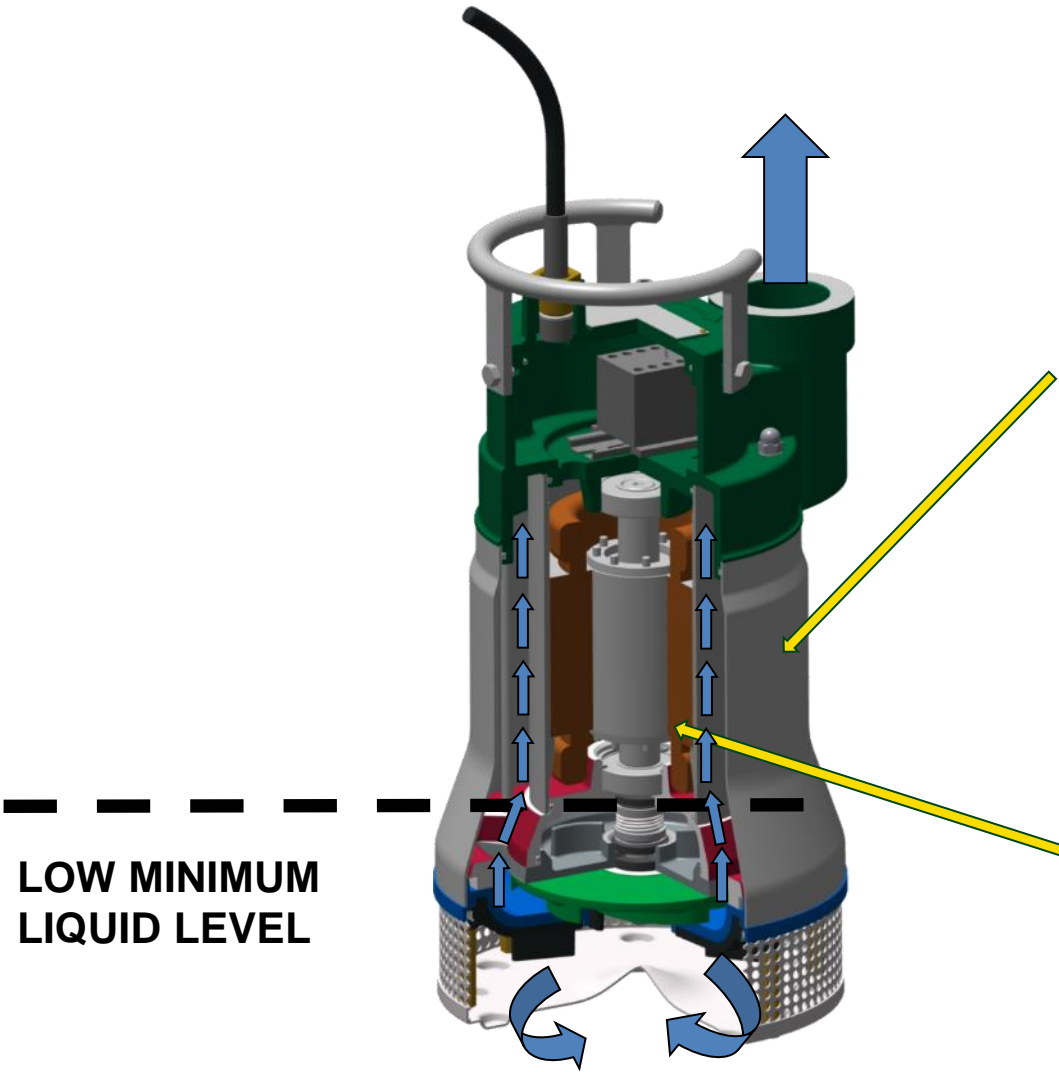


DIG 1100-1500-1800-2200

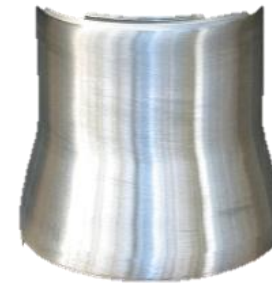
PERFORMANCES



CONSTRUCTION FEATURES AND ADVANTAGES : MOTOR COOLING



**External housing
in AISI 304**



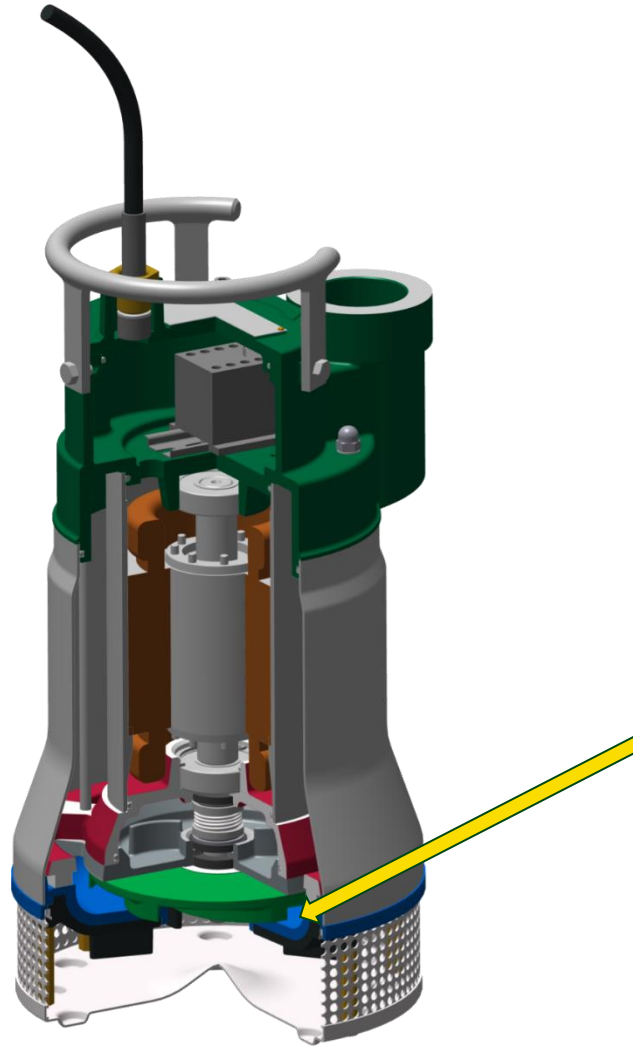
The stainless steel jacket cools the pump and allows continuous operations with low water level.

Motor Protection



A thermal switch protection against overheating (150°C) due to the class F stator.

CONSTRUCTION FEATURES AND ADVANTAGES : WEAR RESISTANCE



Diffuse Rubber and High Chrome impeller



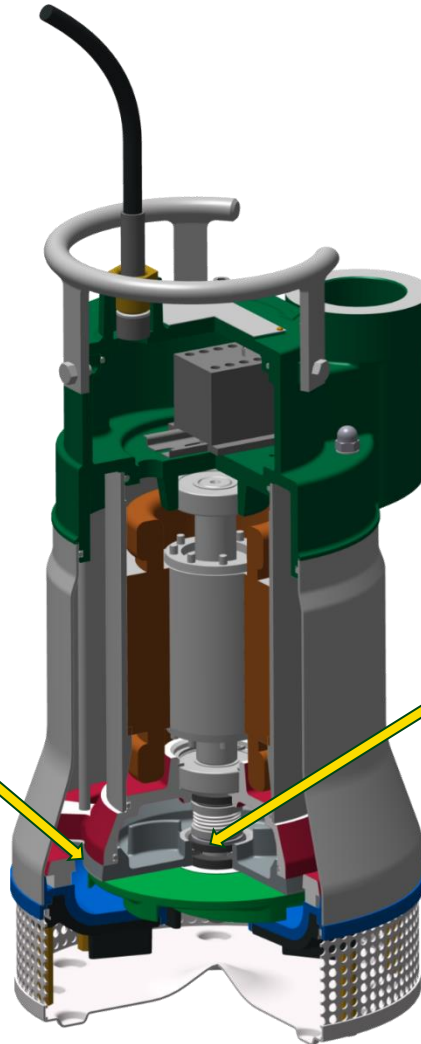
This is the perfect combination to ensure an high wear resistance against abrasive water

CONSTRUCTION FEATURES AND ADVANTAGES : SEALS

Seal house flange



the two blades built in are to avoid turbulence in the oil chamber so that mechanical seals are kept lubricated all the time



Radial seal ring



Major protection to prevent any leakage in the oil chamber

Double mechanical seal



SiC/SiC pump side

Carbon / Alumina motor side

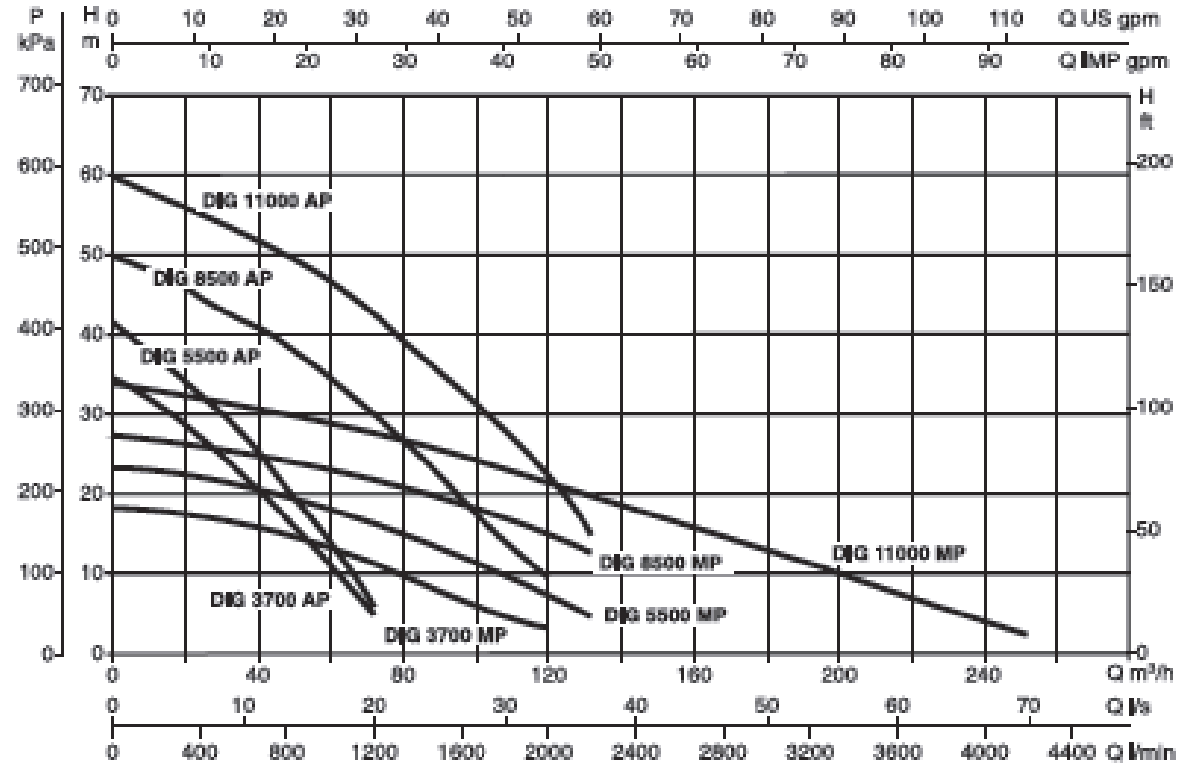
DIG 3700 – 5500 – 8500 - 11000

- Insulation class : F
- Motor protection level : IP 68
- Power from 3,7 up to 11 KW
- Rated speed : 2800 rpm
- Rated voltage : 3 ~ 230, 400, 460, 525-908 V; 50 HZ
- N. Starts / hour : max 15
- Discharge connection 3" up to 6"
- Continuous duty with completely immersed pump
- Flow up to 240 m³/h
- Head up to 57 m
- Power up to 11 KW
- Free passage through the suction grid max 10 mm
- Liquid temperature range from 0° up to 35 °C
- Maximum immersion depth 10 meters



DIG 3700 – 5500 – 8500 - 11000

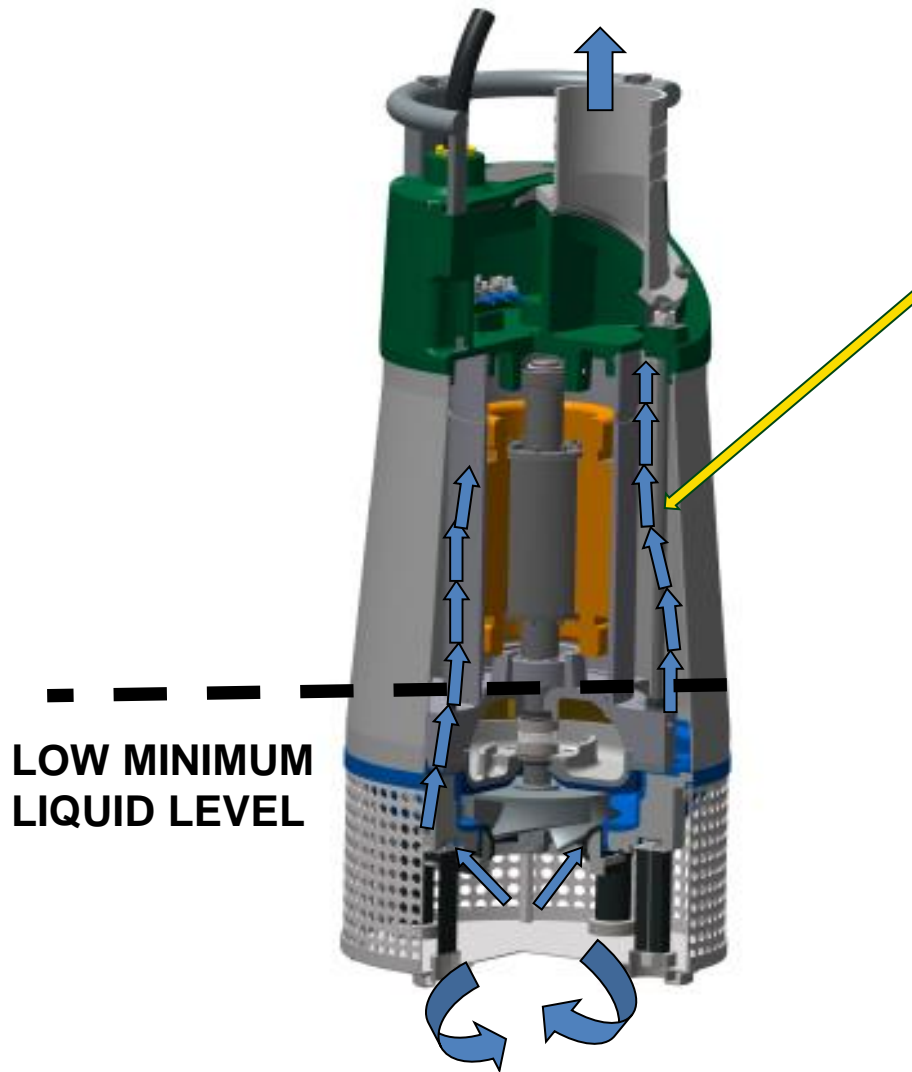
PERFORMANCES



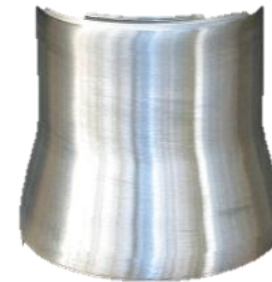
AP : HIGH HEAD

MP : MEDIUM HEAD / HIGH FLOW

CONSTRUCTION FEATURES AND ADVANTAGES : MOTOR COOLING



External housing in AISI 304



The stainless steel jacket cools the pump and allows continuous operations with low water level.

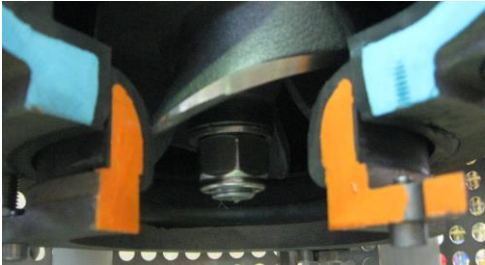
Motor Protection



A thermal switch protection against overheating (150°C) due to the class F stator.

CONSTRUCTION FEATURES AND ADVANTAGES : WEAR RESISTANCE

Ajustable Coating wear ring

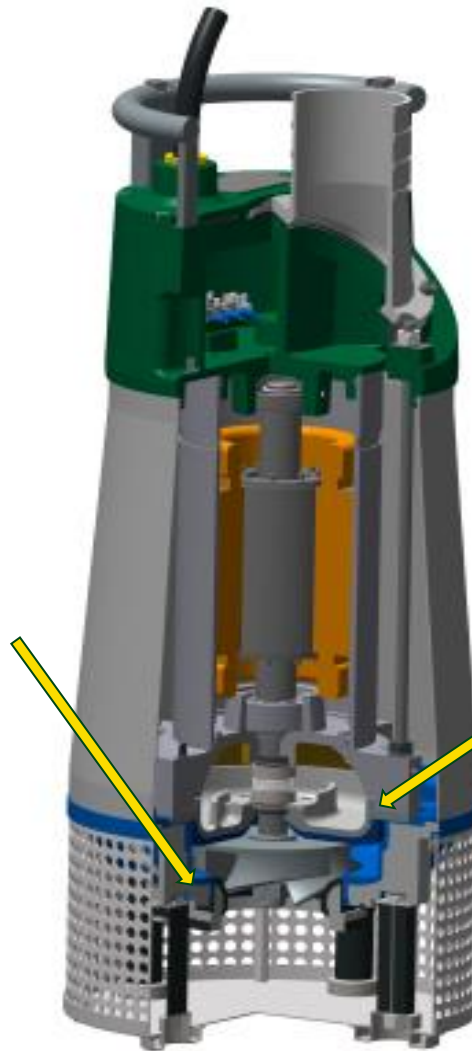


To adjust performances after the wear due by long operation

Diffuse Rubber and High Chrome impeller



This is the perfect combination to ensure an high wear resistance against abrasive water

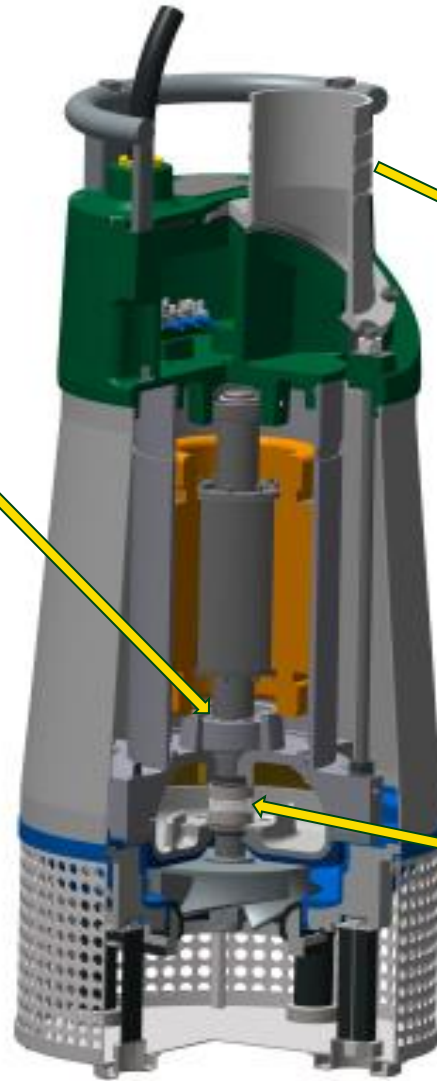


CONSTRUCTION FEATURES AND ADVANTAGES : SEALS

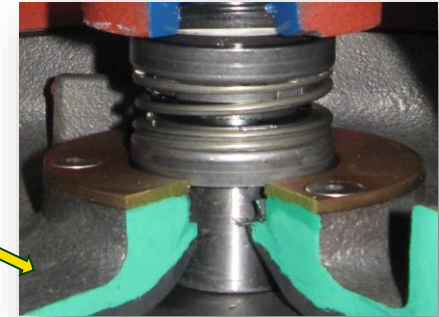
Seal house flange



the two blades built in are to avoid turbulence in the oil chamber so that mechanical seals are kept lubricated all the time



Locking seal ring



to prevent mechanical seals opening due by high pressure in the volute

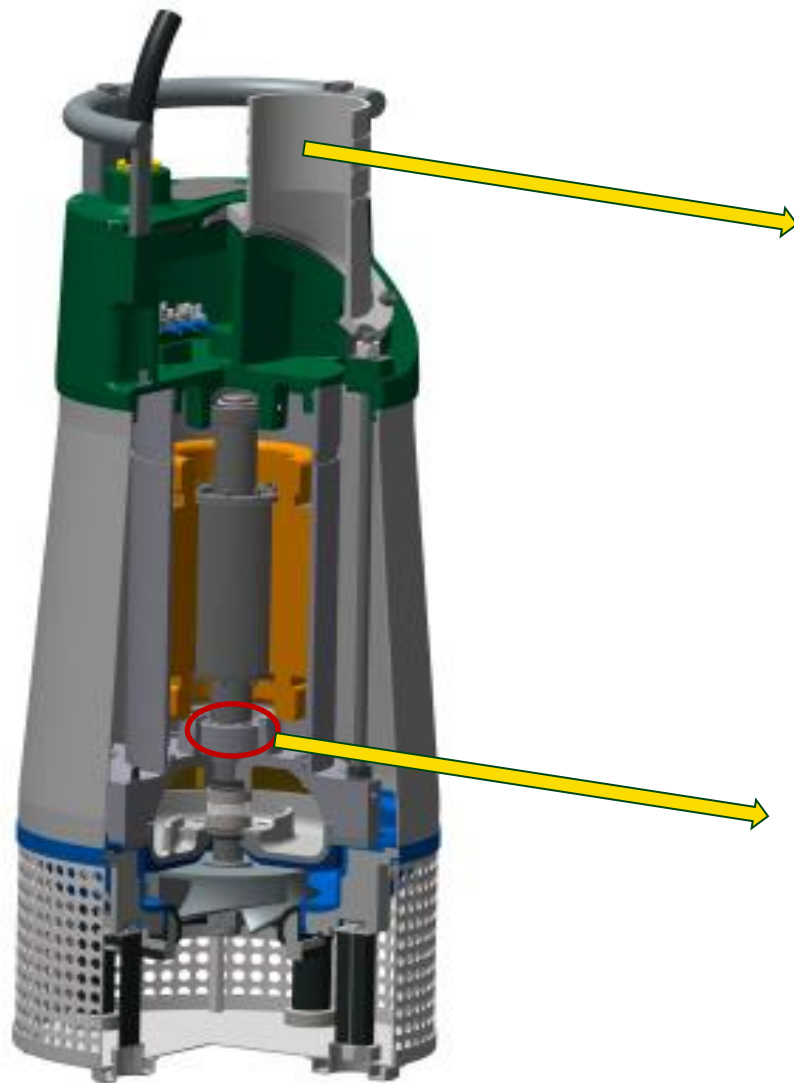
Double mechanical seal



SiC/SiC pump side

Carbon / Alumina motor side

CONSTRUCTION FEATURES AND ADVANTAGES : ROBUST DESIGN



Adjustable discharge, vertical and horizontal discharge for easy hose connection



Bottom Double-ball Bearings



to ensure long life

ACCESSORIES

➤ Available Connections for Fixed installation

Couplings 3" and 4" for DIG 3700 → DIG 11000



➤ Tear-proof Cable

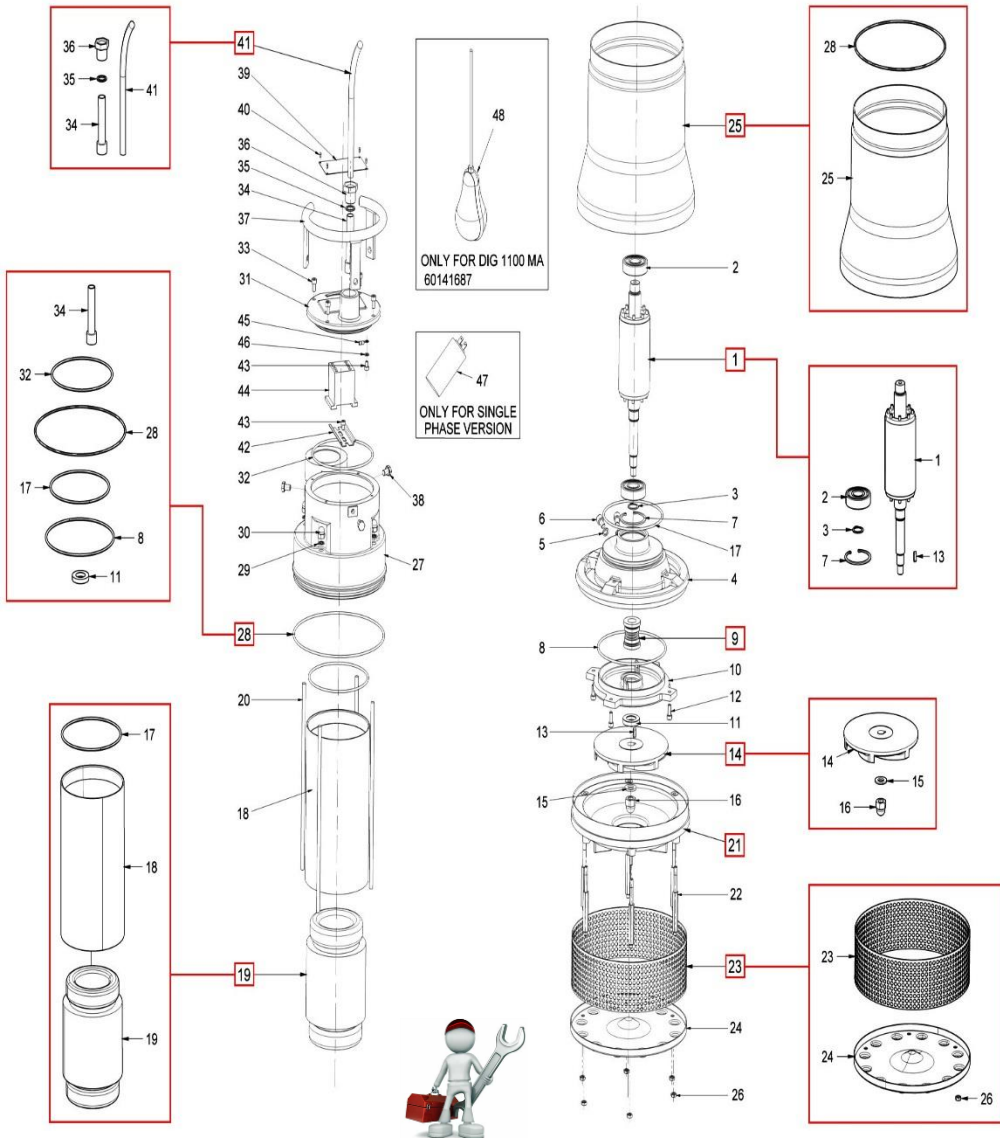
Available for all DIG models

Sistema brevettato N° MI2007A 002303
Patented System N° MI2007A 002303



EASY MAINTENANCE DIG 1100-1500-1800-2200

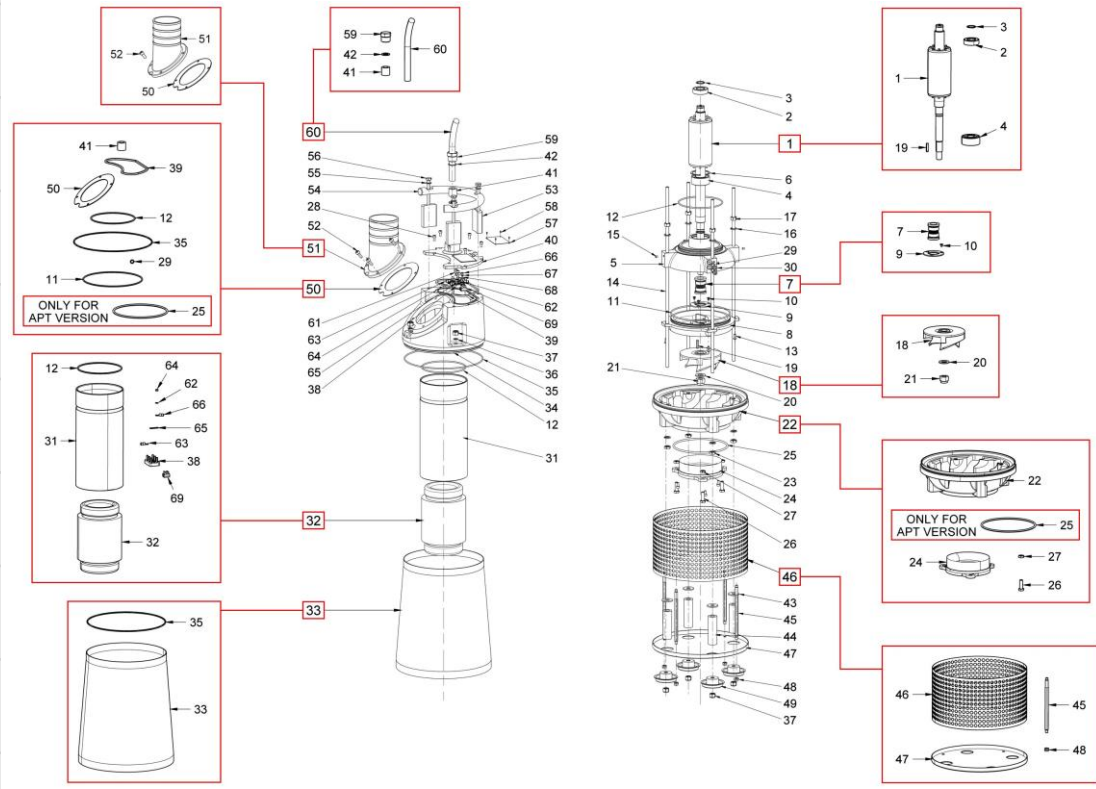
Available items in spare parts kit
CABLE
MOTOR
MOTOR SHAFT
IMPELLER
DIFFUSOR
MECHANICAL SEALS
OR / GASKETS
SLEEVE
FILTER
CAPACITOR FOR SINGLE PHASE VERSION
FLOW SWITCH FOR AUTOMATIC VERSION



No special tools needed

EASY MAINTENANCE DIG 3700-5500-8500-11000

Available items in spare parts kit
MOTOR
MECHANICAL SEAL
MOTOR SHAFT
IMPELLER
DIFFUSOR
OR/GASKETS
FILTER
SLEEVE
HOSE
CABLE



No special tools needed



WATER • TECHNOLOGY

© DAB PUMPS S.p.A.



THANK YOU FOR YOUR ATTENTION